

**ISUZU**

**D-MAX**  
**N60** 1600  
1600 **FIBER**  
1600 **NITRO**  
1600 **SPORT**



**CREW**



ORIGAMI MIURA DESIGN

**D-MAX**  
CREW

**ISUZU**

**M650** **B**  
**BB+**  
**F+**  
**NITRO**  
**SPORT**

# CONTENTS

## D-MAX CREW

The history of the ISUZU pick-up	4
ISUZU, a world leader in the sale of pick-ups	6
New external lines	8
Engine, suspensions and brakes	10
Safety	12
Off-road	16
New interiors and infotainment	18
The new versions: <b>B</b>	22
The new versions: <b>BB+</b>	24
The new versions: <b>F+</b>	26
The new versions: <b>NITRO SPORT</b>	28
Colours	30
Available features	32



**ISUZU**

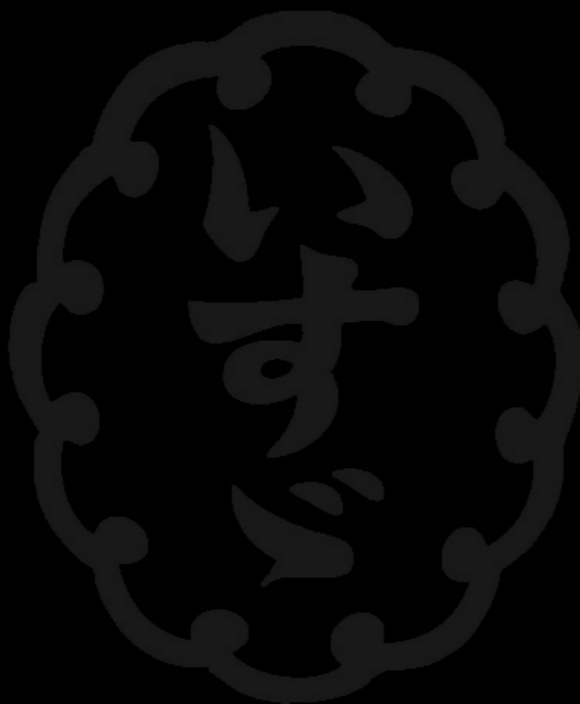
# DISCOVER THE EXCELLENCE OF ISUZU

## The new D-MAX MY24

Since 1916, ISUZU Motors has been redefining the quality standard in the commercial vehicles sector. Having an established product tradition is the key to tackling the challenges lying ahead.

In 1961 ISUZU launched its first pick-up, ELFIN, one of the world's first pick-ups to have four doors.

That moment marked the start of an extraordinary journey that continues to this day.



The milestones:

- 1934: ISUZU becomes the name of the brand, in homage to the river near the Ise Grand Shrine.
- 1960s: The first ISUZU pick-up is launched, marking the start of a legendary adventure.
- 1980s: ISUZU conquers the world with its uncompromising quality.
- 2002: The launching of D-MAX in Thailand is an instant success.
- 2003: D-MAX conquers Europe, strengthening our global leadership.
- 2020: The N60 model redefines the concept of performance and safety.

### The future is here: D-MAX N60 MY24.

The latest addition to the range, the **D-MAX N60 MY24**, is the quintessence of 20 years of innovation, offering an irresistible combination of power, advanced technology and style. In conquering the most demanding routes, whether city streets or tougher terrains, the **D-MAX N60 MY24** is ready to win any challenge with grit and style.

Discover the **D-MAX N60 MY24** and get ready for an unprecedented driving experience combining technology, safety and power.



1961  
ISUZU ELFIN



1963  
ISUZU WASP



1972  
ISUZU FASTER



1981  
ISUZU PUP



1996  
ISUZU SPARK



2002  
ISUZU D-MAX



2012  
ISUZU D-MAX



2017  
ISUZU D-MAX



2020  
ISUZU D-MAX N60



2024  
ISUZU D-MAX N60

ISUZU, PRESENT IN 150 COUNTRIES WORLDWIDE, IS ONE OF THE WORLD LEADERS IN THE PRODUCTION AND SALE OF PICK-UPS AND TRUCKS.

**IT HOLDS THE NUMBER 1\* MARKET SHARE IN 37 COUNTRIES.**

**DID YOU KNOW THAT...ISUZU TESTED THE NEW D-MAX WITH A SERIES OF TRIALS COVERING 4.000.000 KM, A DISTANCE EQUIVALENT TO 100 TIMES AROUND THE WORLD?**

ISUZU

## NEW EXTERNAL LINES

### Innovative design and exceptional performances

The new **D-MAX** takes inspiration from the concept of "Miura Design", an origami model designed by the Japanese astrophysicist Kōryō Miura.

The new vehicle has a well defined, sturdy and dynamic design. The polygonal elements merge with curved and straight lines, generating a sporty and elegant effect.

The front becomes even more aggressive and distinctive, its style varying across the versions: from the minimalist design of the B version to the bold sportiness of NITRO SPORT and the elegance of the F+ version.



### Optimised aerodynamics and renewed style

The bumpers, headlights and front grille have been redesigned to improve the front aerodynamics. Also the bottom-range B and BB+ models have been redesigned with a clean and bold no-frills style.

### Advanced illumination and distinctive details

The F+ and NITRO SPORT models are equipped with bi-LED headlights and integrated directional lights. At the rear, these versions have new light domes and a tonneau design that emphasises the lines of the new D-MAX, with a horizontal ribbing resembling a spine.

### Exclusive finishes

The NITRO SPORT version is further distinguished by its "High Appearance Gray" finishes and black/dark grey metallic elements, revealing a unique and sophisticated look.



## ENGINE, SUSPENSIONS AND BRAKES

### A powerful and green engine

The new D-MAX N60 has a four-cylinder diesel-powered engine boasting advanced technology, capable of delivering 164 hp power and 360 Nm torque. Thanks to technological innovations such as Start&Stop, the low-pressure EGR system and the SCR system, the vehicle respects Euro 6e regulations, offering efficiency combined with low consumption.

### Emissions and consumption

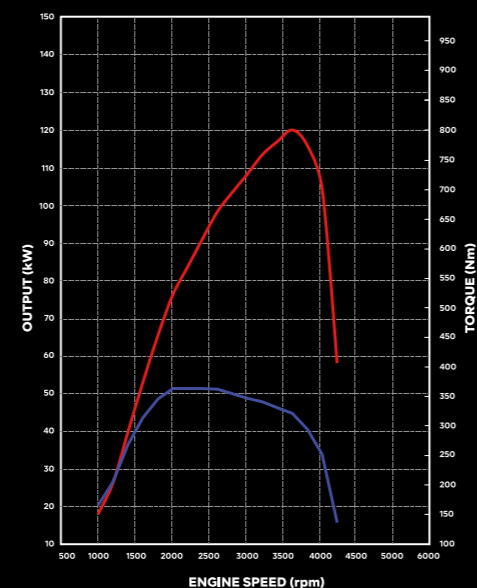
The versions of the new D-MAX N60 have the following emission values:  
**B version:** 235 g/kg of CO<sub>2</sub> in the combined cycle, with a fuel consumption of 8.9 l/100 km.

**BB+ version:** 235 g/kg of CO<sub>2</sub> in the combined cycle, with a fuel consumption of 8.9 l/100 km.

**F+ version:** 235 g/kg of CO<sub>2</sub> in the combined cycle, with a fuel consumption of 9.0 l/100 km.

**NITRO SPORT version:** 235 g/kg of CO<sub>2</sub> in the combined cycle, with a fuel consumption of 9.0 l/100 km.

The **AdBlue®** fuel tank with 14-litre capacity and low consumption ensures excellent overall autonomy, while the vehicle guarantees a high recyclability and recovery rate, consistently with ISUZU's commitment to environmental protection.



The graph shows the characteristic curves for power in red and torque in blue.

### Chassis, suspensions and brakes

The **cab** of the new D-MAX N60 is made with high-resistance steels for its structural elements, making it light yet sturdy.

The **chassis** is made with an additional crossbar for enhanced safety in case of lateral collisions, while the dimensions of the struts guarantee torsional rigidity of the chassis.

The **shear** cab supports guarantee excellent driving comfort; vibrations and irregular features of the road are optimally dampened. The internal seals on the doors and central pillar added to the new insulating materials guarantee excellent soundproofing of the cab.

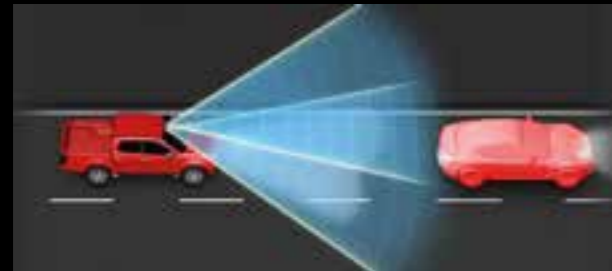
The **front suspensions** (independent) and **rear suspensions** (leaf-spring) have improved with respect to the previous generation. The upper triangle of the **front suspension** has been repositioned further up to reduce body roll on bends, while the **rear suspension** is more comfortable thanks to a different calibration of the shock-absorbers.

The **front brake discs** are vented while **drum brakes** are mounted at the rear. This mixed-type braking system (discs and drums) combines the advantages of both technical solutions and ensures an excellent braking capacity even in full-load conditions.



# SAFETY

You are always in first place



**AHB (Automatic High Beam).** The ADAS AHB system automatically adjusts the vehicle's high-beam headlights and switches to low-beam headlights when it detects approaching vehicles or in urban illumination conditions. This ensures optimal visibility without blinding other drivers, thus improving safety and driving comfort at night.



**TCS (Traction Control System).** The TCS system constantly monitors wheel traction and engine power and/or applies the brakes to prevent loss of wheel traction during acceleration, thus improving the vehicle's stability and grip on slippery or low-adherence surfaces.



**ESC (Electronic Stability Control).** The ESC system constantly monitors the vehicle's stability and automatically intervenes by braking single wheels or reducing the engine power to prevent under-steering or over-steering, helping the driver to control the vehicle in emergency situations or on slippery roads.



**TSR (Traffic Sign Recognition).** The TSR system detects and displays the road signs on the dashboard display, keeping the driver informed of any limitations and traffic regulations.



**ISL (Intelligent Speed Limiter).** The ISL system automatically adjusts the vehicle's speed on the basis of the limits marked on the road signs, keeping the speed within the legal limits.



**LDWS (Lane Departure Warning System).** The LDW system warns the driver when the vehicle is about to depart from its lane without signalling, which helps to prevent accidents due to unwanted departures.

# ADAS: Advanced Driver-Assistance Systems

All advanced driver assistance systems help the car to understand the driving conditions and warn the driver of any dangerous situations to prevent accidents, for a safer and more comfortable driving experience. Thanks to the adoption of the fourth-generation stereo camera, the ADAS have been optimised and guarantee improved safety.



**LDP (Lane Departure Prevention).** The LDP intervenes gently on the steering wheel to bring the vehicle back to the correct lane in case of unintentional departures.



**LKAS (Lane Keeping Assist System).** The LKAS system helps to keep the vehicle centred in its lane by applying slight corrections to the steering wheel.



**BSM (Blind Spot Monitoring).** The BSM system monitors blind spots and warns the driver of the presence of vehicles that do not show up on the side mirrors.



**ELK (Emergency Lane Keeping).** The ELK intervenes to keep the vehicle within the lane during emergency situations, preventing accidental departures from the lane.



**MAM (Pedal Misapplication Mitigation).** Involuntary acceleration mitigation refers to systems designed to prevent or reduce the severity of accidents caused by accidental acceleration in the face of an obstacle.



**MCB (Multi-Collision Brake).** The MCB system applies the brakes automatically after an initial collision, reducing the possibility of secondary impacts and improving the overall safety of the vehicle.



## New features of MY24

All advanced driver assistance systems help the car to understand the driving conditions and warn the driver of any dangerous situations to prevent accidents, for a safer and more comfortable driving experience. Thanks to the adoption of the fourth-generation stereo camera, the ADAS have been optimised and guarantee improved safety.



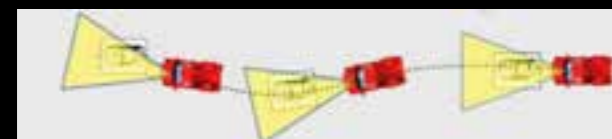
**FCW (Forward Collision Warning) + AEB (Automatic Emergency Braking).** The FCW system warns the driver of potential frontal collisions, enabling the driver to promptly react to prevent accidents. The AEB system brakes the vehicle automatically in case of an imminent collision, thus reducing the severity of the impact or preventing the accident. The system has been optimised with the Turn Assist function, which allows the vehicle to brake automatically even while it turns in case of a potential impact.



**ISA (Intelligent Speed Assist).** This device allows vehicles to automatically limit the driving speed on the basis of the road signs.



**IACC (Intelligent Adaptive Cruise Control).** The IACC system allows the driver to set a desired cruising speed and automatically maintains a pre-set safety distance from the preceding vehicle, autonomously regulating the vehicle's speed on the basis of the traffic conditions. Compared to Adaptive Cruise Control it adds the possibility of adapting the vehicle's speed on the basis of the road signs. This system helps to improve driving comfort and safety on highways, while also reducing the risk of collisions.



**TJA (Traffic Jam Assist).** The TJA system works with the IACC activated and allows the vehicle to accelerate, brake and adapt to the preceding vehicle. The system works at all speeds below 60 km/h and ensures safer and more comfortable driving in traffic.



**RCTA (Rear Cross Traffic Alert) + RCTB (Rear Cross Traffic Brake).** The RCTA system warns the driver of vehicles approaching from the side during reverse drive manoeuvres, preventing collisions. The RCTB system brakes the vehicle during reverse drive manoeuvres when a vehicle approaches from the side, preventing collisions.



**TPMS (Tyre Pressure Monitoring System).** The system allows for reporting the tyre pressure on the dashboard display to keep the driver informed of any anomaly that may jeopardise driving safety.



## AIRBAG

**PASSIVE SAFETY.** As a standard feature all models are equipped with a driver's knee airbag while all models have an innovative airbag positioned between the front seats. This means that the standard equipment consists of 8 airbags.

## OFF-ROAD

### Explore the impossible with ISUZU D-MAX N60 MY24

ISUZU D-MAX is ready to tackle every challenge with its 4x4 electronically engaged traction system, even during motion, and active electronic traction control with the self-locking function. The low-ratio gears, available for the most extreme conditions and the heaviest loads, transform D-MAX into a vehicle suited to a vast range of uses.

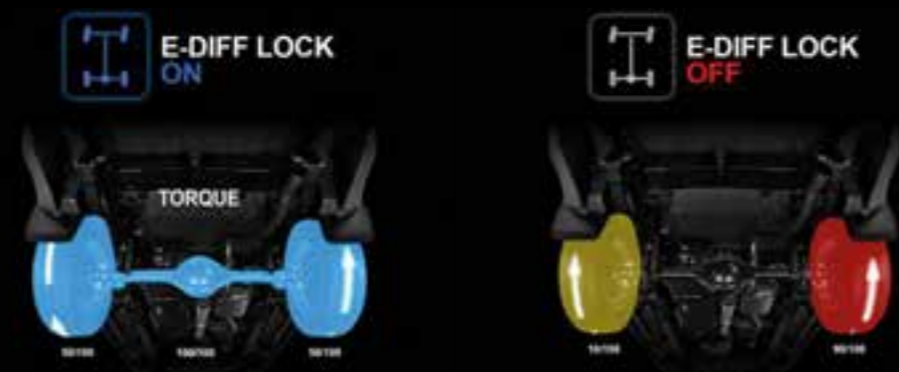


### Uphill and downhill assist

HSA → HILL START ASSIST  
 HDC → HILL DESCENT CONTROL

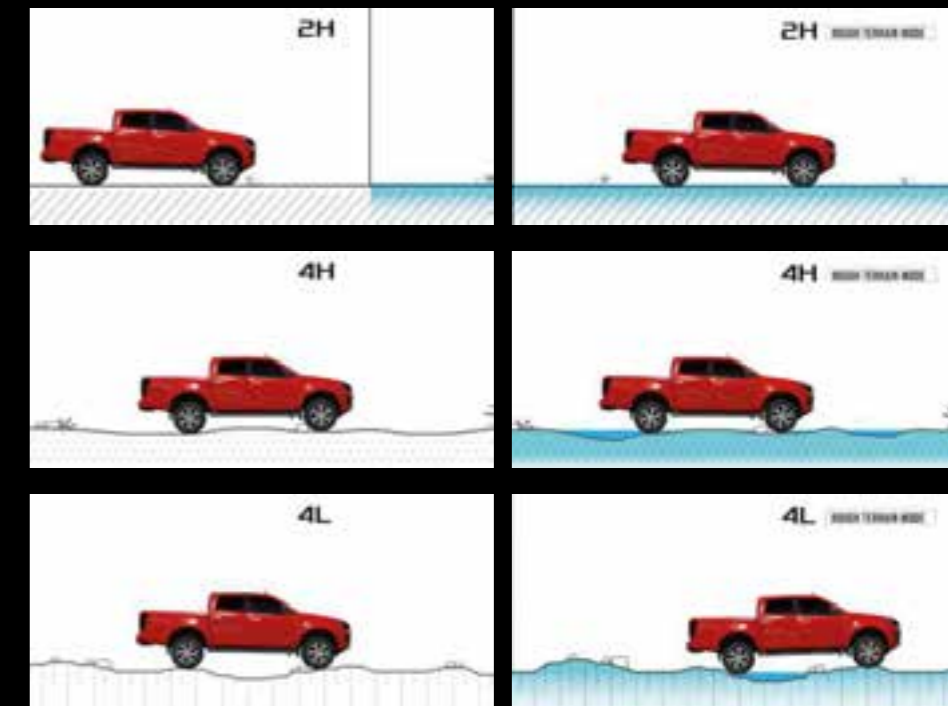
### Mechanical locking differential

Available in 4L mode for improved off-road performance, the mechanical locking differential guarantees optimal traction. An activation button in the cab activates a solenoid valve that locks the differential, rigidly coupling the rear left and right wheels as if they belonged to a single axle. Compared to the previous generation, the differential and the rear axle have been reinforced to improve their resistance and reliability. In addition, there's a position sensor that constantly monitors the state of activation.



### New Rough Terrain System

A new system that optimises traction on the basis of the type of terrain, guaranteeing optimal performances on any surface. This system, which can be activated through a button on the dashboard, ensures advanced control of the vehicle's traction, adapting to both 2-wheel or 4-wheel drive and activation of differential locking.



### Towing capacity

ISUZU was the first company to introduce a towing capacity of 3,500 kg. The D-MAX is designed for tackling any load condition without hassles, even on the most difficult uphill. The TSC function ensures safe towing by automatically intervening on the braking system to reduce oscillations caused by external forces such as lateral wind gusts during towing of trailers, guaranteeing stable and safe motion.



### Wading capability

The new D-MAX MY24 never forgets its roots: off-road adventure remains its natural habitat.

Thanks to its minimal height above the ground of 220 mm\* and its redesigned aspiration system and the rear differential breather, the D-MAX offers a wading depth of up to 800 mm.

\*Measurement of the clear opening under the front axle

## NEW INTERIORS AND INFOTAINMENT

### A novel driving experience

The new ISUZU D-MAX is designed to offer an exceptional driving experience, with elegantly finished interiors and advanced technological features.



### Elegant and up-to-date interiors

The D-MAX cab has evolved to offer an elegant and up-to-date touch on every version:

- **BB+ version:** Metallic Bright Silver finishes with high-quality fabric seats.
- **F+ version:** Metallic Satin Silver finishes with leather/faux leather seats featuring Origami Miura Design details.
- **NITRO SPORT version:** Piano Black/Metallic Dark Gray finishes with leather/faux leather seats featuring Origami Miura Design details.



### Advanced infotainment

The entire D-MAX range is equipped with an updated infotainment system featuring a **broad 8" multimedia screen** for the B, BB+ and F+ versions, **and a 9" screen** for the NITRO SPORT version.

This guarantees an advanced connectivity experience and on-board entertainment, making each journey pleasant and comfortable.

Moreover, a **USB-C port** is included for rapid mobile phone charging.



Discover the new ISUZU D-MAX and enjoy a peerless driving experience merging elegance, technology and performance.



# D-MAX

## N60B CREW

### THE NEW VERSIONS

#### D-MAX CREW N60B

#### Main characteristics

- 18" steel wheel rims
- 4.2" on-board computer with 8" infotainment system and Apple Car Play/Android Auto wireless connection with USB-C port
- IACC (Intelligent Adaptive Cruise Control)
- Manual climate control
- Audio system with 2 speakers
- Driver's seat with 6 manually adjustable positions and back support
- Fabric seats
- Metallic Silver/Black finishes
- 4-wheel drive available, low-ratio gears and "Rough Terrain Mode System"
- 8 airbags
- Hill Start Assist and Hill Descent Control (HSA-HDC)
- Rear video camera
- Front and rear halogen lights
- Advanced safety systems
  - FCW - Front Collision Warning
  - LDWS - Lane Departure Warning System
  - LDP - Lane Departure Prevention
  - LKAS - Lane Keeping Assist System
  - ELK - Emergency Lane Keeping
  - AEB - Autonomous Emergency Braking + Turn Assist
  - BSM - Blind Spot Monitoring
  - RCTA - Rear Cross Traffic Alert
  - RCTB - Rear Cross Traffic Brake
  - MCB - Multi-Collision Brake
  - TJA - Traffic Jam Assistance
  - ISA - Intelligent Speed Assistance
  - ISL - Intelligent Speed Limiter
  - TSR - Traffic Sign Recognition
  - MAM - Pedal Misapplication Mitigation
  - AA - Attention Assist



"Power and versatility for dominating any terrain"

# D-MAX

## N60BB+ CREW

### THE NEW VERSIONS

#### D-MAX CREW N60BB+

#### Main characteristics

- 18" alloy (Silver) wheel rims
- 4.2" on-board computer with 8" infotainment system and Apple Car Play/Android Auto wireless connection with USB-C port
- IACC (Intelligent Adaptive Cruise Control)
- Manual climate control
- Audio system with 4 speakers
- Driver's seat with 6 manually adjustable positions and back support
- High-quality fabric seats
- Metallic Silver-Black interior finishes
- 4-wheel drive available, low-ratio gears, locking rear differential and "Rough Terrain Mode System"
- 8 airbags
- Hill Start Assist and Hill Descent Control (HSA-HDC)
- Rear video camera with rear parking sensors
- Front and rear halogen lights
- Advanced safety systems:
  - FCW - Front Collision Warning
  - LDWS - Lane Departure Warning System
  - LDP - Lane Departure Prevention
  - LKAS - Lane Keeping Assist System
  - ELK - Emergency Lane Keeping
  - AEB - Autonomous Emergency Braking + Turn Assist
  - BSM - Blind Spot Monitoring
  - RCTA - Rear Cross Traffic Alert
  - RCTB - Rear Cross Traffic Brake
  - MCB - Multi-Collision Brake
  - TJA - Traffic Jam Assistance
  - ISA - Intelligent Speed Assistance
  - ISL - Intelligent Speed Limiter
  - TSR - Traffic Sign Recognition
  - MAM - Pedal Misapplication Mitigation
  - AA - Attention Assist



"Energy and bold character  
without compromise"



# D-MAX

## N60F+ CREW

## THE NEW VERSIONS

### D-MAX CREW N60F+

#### Main characteristics

- Size 18" alloy wheel rims (Machining), side foot steps and external chrome-plated finishes
- 7" on-board computer and digital tachometer, 8" infotainment system with Apple Car Play/Android Auto wireless connection with USB-C port
- IACC (Intelligent Adaptive Cruise Control)
- Dual-zone automatic climate control
- Audio system with 6 speakers
- Driver's seat with 8 electrically adjustable positions and back support
- Leather/faux leather seats with "Origami Miura Design" finish
- Metallic Silver-Black - Satin Silver "Origami Miura Design" internal finishes
- 4-wheel drive available, low-ratio gears, locking rear differential and "Rough Terrain Mode System"
- 8 airbags
- Hill Start Assist and Hill Descent Control (HSA-HDC)
- Rear video camera with front and rear parking sensors
- Front and rear bi-LED lights
- Advanced safety systems
  - FCW - Front Collision Warning
  - LDWS - Lane Departure Warning System
  - LDP - Lane Departure Prevention
  - LKAS - Lane Keeping Assist System
  - ELK - Emergency Lane Keeping
  - AEB - Autonomous Emergency Braking + Turn Assist
  - BSM - Blind Spot Monitoring
  - RCTA - Rear Cross Traffic Alert
  - RCTB - Rear Cross Traffic Brake
  - MCB - Multi-Collision Brake
  - TJA - Traffic Jam Assistance
  - ISA - Intelligent Speed Assistance
  - ISL - Intelligent Speed Limiter
  - TSR - Traffic Sign Recognition
  - MAM - Pedal Misapplication Mitigation
  - AA - Attention Assist



"Elegance for impeccable performances"

## THE NEW VERSIONS

### D-MAX CREW N60 NITRO SPORT

**D-MAX**  
**N60 NITRO**  
**SPORT** CREW

#### Main characteristics

- Front finish with "High Appearance" varnish
- 18" alloy wheel rims (Metallic Dark Gray), side foot steps and Metallic Dark Gray external finishes
- 7" on-board computer and digital tachometer, 9" infotainment system with Apple Car Play/Android Auto wireless connection
- 2 rear USB-C ports
- IACC (Intelligent Adaptive Cruise Control)
- Dual-zone automatic climate control
- Audio system with 8 speakers
- Driver's seat with 8 electrically adjustable positions and back support
- Leather/faux leather seats with "Origami Miura Design" finish
- Piano Black - Metallic Dark Gray internal finishes "Origami Miura Design"
- 4-wheel drive available, low-ratio gears, locking rear differential and "Rough Terrain Mode System"
- 8 airbags
- Hill Start Assist and Hill Descent Control (HSA-HDC)
- Rear video camera with front and rear parking sensors
- Rear-view mirror with auto-dimming
- Front and rear bi-LED lights
- Automatic headlight adjustment
- Advanced safety systems:
  - FCW - Front Collision Warning
  - LDWS - Lane Departure Warning System
  - LDP - Lane Departure Prevention
  - LKAS - Lane Keeping Assist System
  - ELK - Emergency Lane Keeping
  - AEB - Autonomous Emergency Braking + Turn Assist
  - BSM - Blind Spot Monitoring
  - RCTA - Rear Cross Traffic Alert
  - RCTB - Rear Cross Traffic Brake
  - MCB - Multi-Collision Brake
  - TJA - Traffic Jam Assistance
  - ISA - Intelligent Speed Assistance
  - ISL - Intelligent Speed Limiter
  - TSR - Traffic Sign Recognition
  - MAM - Pedal Misapplication Mitigation
  - AA - Attention Assist



"Controlled speed and unending solidity for the D-MAX top-of-the-range pick-up"





# COLOURS

We all have our own favourite colour:  
we make it available.



Biarritz Blue Met



Dolomite White Pearl  
(only for F+ and NITRO SPORT)



Islay Gray Mica



Mercury Silver Met



Namibu Orange Mica



Obsidian Gray Mica



Onyx Black Mica



Red Spinel Mica



Splash White

# AVAILABLE FEATURES

DRIVING COMFORT	N60B	N60BB+	N60F+	N60 NITRO SPORT
Start&Stop	•	•	•	•
4.2" on-board computer	•	•		
7" on-board computer and digital tachometer			•	•
Cruise Control	•	•	•	•
Intelligent Adaptive Cruise Control (IACC) with Traffic Jam Assist (TJA) and Intelligent Speed Assist (ISA)	•	•	•	•
Adaptive Cruise Control	•	•	•	•
Steering wheel controls	•	•	•	•
Electrical and heated rear-view mirrors	•	•	•	•
Athermic windscreen (IR-UVA-UVB)	•	•	•	•
Rear fog lights	•	•	•	•
Steering wheel adjustment height-wise and depth-wise	•	•	•	•
Settable speed limiter (60-180 km/h)	•	•	•	•
Hill Start Assist and Hill Descent Control (HSA-HDC)	•	•	•	•
Air conditioning	•	•		
Dual-zone climate control			•	•
Driver's seat back support adjustment	•	•	•	•
Driver's seat 6 manual settings	•	•		
Driver's seat 8 electrical settings			•	•
Heated front seats		•	•	•
Halogen front fog lights		•		
LED front fog lights			•	•
Mechanical locking differential		•	•	•
Rear parking sensors		•		
Front and rear parking sensors			•	•
Rear video camera	•	•	•	•
Internal rear-view mirror with auto-dimming				•
Front bi-LED lights			•	•
Dual Sonic LED rear lights			•	•
Automatic height adjustment of lights				•
Leather and faux leather seats			•	•

	N60B	N60BB+	N60F+	N60 NITRO SPORT
Rough Terrain Mode	•	•	•	•
Push-button ignition system			•	•
CAB COMFORT	N60B	N60BB+	N60F+	N60 NITRO SPORT
Locking with remote control	•	•	•	•
Front and rear pillar grab handle	•	•	•	•
Follow-me-home headlamps	•	•	•	•
Automatic light switch-off	•	•	•	•
Electronically folding rear-view mirrors		•	•	•
Rear climate control nozzles			•	•
Welcome light			•	•
Automatic door locking			•	•
Alarm system			•	•
DRIVING SAFETY	N60B	N60BB+	N60F+	N60 NITRO SPORT
Electric power steering	•	•	•	•
Anti-Lock Braking System (ABS)	•	•	•	•
Front Collision Warning (FCW)	•	•	•	•
Autonomous Emergency Brake (AEB) with Turn Assist	•	•	•	•
Pedal Misapplication Mitigation (MAM)	•	•	•	•
Emergency Stop Signal (ESS)	•	•	•	•
Traffic Sign Recognition (TSR)	•	•	•	•
Manual Speed Limiter (MSL)	•	•	•	•
Speed Assistance System (SAS)	•	•	•	•
Intelligent Speed Limiter (ISL)	•	•	•	•
Electronic Stability Control with TCS	•	•	•	•
Attention Assist	•	•	•	•
Lane Departure Warning System (LDWS)	•	•	•	•
Lane Departure Prevention (LDP)	•	•	•	•
Lane Keep Assist System (LKAS)	•	•	•	•
Multi-Collision Brake	•	•	•	•

	N60B	N60BB+	N60F+	N60 NITRO SPORT
Windscreen wipers with rain sensor	•	•	•	•
Rear window heating element	•	•	•	•
E-call emergency calls	•	•	•	•
8 airbags	•	•	•	•
Deactivatable passenger airbag	•	•	•	•
Automatic headlights with automatic high-beam headlights	•	•	•	•
Blind Spot Monitor (BSM)	•	•	•	•
Windscreen wiper nozzle on brushes	•	•	•	•
Rear Cross Traffic Alert (RCTA)	•	•	•	•
Rear Cross Traffic Brake (RCTB)	•	•	•	•
Emergency Lane Keeping (ELK)	•	•	•	•
Tyre pressure monitoring sensor	•	•	•	•
AUDIO	N60B	N60BB+	N60F+	N60 NITRO SPORT
8" multimedia touch-screen display, AUX, USB-C, wireless Android Auto and Apple CarPlay with Wi-Fi and Bluetooth, MirrorLink and Miracast DAB+, Maps and navigation through Apple Carplay/Android Auto	•	•	•	
9" multimedia touch-screen display, AUX, USB-C, wireless Android Auto and Apple CarPlay with Wi-Fi and Bluetooth, MirrorLink and Miracast DAB+, Maps and navigation through Apple Carplay/Android Auto				•
Front door speakers	•	•	•	•
Rear door speakers		•	•	•
Tweeter			•	•
Speaker on roof				•
EXTERNAL/INTERNAL FINISHES	N60B	N60BB+	N60F+	N60 NITRO SPORT
Two-colour black / dark grey front grille	•			
Two-colour light black / metallic grey front grille		•		
Two-colour metallic dark grey / chrome-plated front grille			•	
Two-colour black / dark metallic grey front grille				•
Front finish with "High Appearance" varnish				•
No-colour front bumper	•			
Matching front bumper		•	•	
Decorated front bumper				•
No-colour rear bumper integrated into the body	•			
Matching rear bumper integrated into the body		•	•	•

	N60B	N60BB+	N60F+	N60 NITRO SPORT
No-colour door handles	•			
Matching door handles		•		
Chrome-plated door handles			•	
Metallic grey door handles				•
No-colour tailgate handle with key	•			
Matching tailgate handle with key		•		
Chrome-plated tailgate handle with key			•	
Metallic tailgate handle with key				•
Steel wheel rims	•			
Alloy (SILVER) wheel rims		•		
Alloy (MACHINING) wheel rims			•	
Alloy (Metallic MATT DARK GREY) wheel rims				•
No-colour external rear-view mirrors	•			
External two-colour matching/black rear-view mirrors with direction indicator		•		
External two-colour chrome-plated/black rear-view mirrors with direction indicator			•	
External two-colour metallic/black rear-view mirrors with direction indicator				•
Piano Black / Metallic Dark Gray interior finishes				•
"Origami Miura Design" interior finishes			•	•
Central pillar with black finish			•	•
Chrome-plated satin-finish power window switches			•	•
Dashboard with decorations			•	•
Glossy black 4x4 knob with chrome-plated insert			•	•
Urethane gearbox lever	•	•		
Leather gearbox lever with decoration			•	•
Parking brake lever with chrome-plated button			•	•
Deluxe dashboard with central glove compartment		•		
Deluxe dashboard with central glove compartment and visible stitching			•	•
Urethane steering wheel with decoration	•	•		
Leather steering wheel with decoration			•	•
Silver lateral foot steps			•	
Dark grey lateral foot steps				•

**D-MAX**  
CREW

**ISUZU**

ORIGAMI MIURA DESIGN



**M50**  
**B**  
**BB+**  
**F+**  
**NITRO**  
**SPORT**

For more information:

[www.isuzu.it](http://www.isuzu.it)

[www.isuzu.fr](http://www.isuzu.fr)

[www.isuzu.ch/it-ch](http://www.isuzu.ch/it-ch)

[www.isuzu.ch/fr-ch](http://www.isuzu.ch/fr-ch)

[www.isuzu.ch/de-ch](http://www.isuzu.ch/de-ch)

[www.isuzu.es](http://www.isuzu.es)

[www.isuzu.si](http://www.isuzu.si)

REV. 01/2024 Designed by **STUDIO HITA**

ISUZU reserves the right to change specifications and equipment without notice. Specification details and equipment mentioned or shown in this brochure may be subject to change to meet local conditions and government requirements.

Photos that do not comply with contractual standards. Actual vehicle body colors may vary slightly from the colors in the photographs printed in this catalogue.

**MIDI** europe s.r.l.  
**ISUZU**

recommends



**5** YEAR  
WARRANTY/  
100,000 km

